

Ruslan and Ludmilla Overture

Arranged for mixed octet

Mikhail Glinka

(1804 - 1857)

Arranged by

Rick Robinson

Presto

Flute

Clarinet in A

Bassoon

Trumpet in C

Trombone

Percussion*

Timpani

Violin

Double Bass

8

Fl.

Cl. (A)

Bssn.

Trpt. (C)

Trbn.

Perc.

Timp.

Vln.

Bass

ff

f

f

mf

15

Fl. Cl. (A) Bssn. Trpt. (C) Trbn. Timp. Vln. Bass

ff
sf f
f sf
mf sf
mf
ff
f sf

SAMPLE COPY - Do Not Use for Performance

Detailed description: This block contains the musical score for measures 15 through 21. It features eight staves: Flute (Fl.), Clarinet in A (Cl. (A)), Bassoon (Bssn.), Trumpet in C (Trpt. (C)), Trombone (Trbn.), Timpani (Timp.), Violin (Vln.), and Bass. The key signature has one sharp (F#) and the time signature is 4/4. The Flute and Violin parts have a melodic line with a crescendo leading to a fortissimo (ff) dynamic. The Clarinet and Bassoon parts have a similar melodic line with a crescendo leading to sf and f dynamics. The Bassoon, Trumpet, and Trombone parts have a rhythmic accompaniment with sf and mf dynamics. The Timpani part has a simple rhythmic pattern with mf dynamics. The Bass part has a rhythmic accompaniment with f and sf dynamics.

22

Fl. Cl. (A) Bssn. Trpt. (C) Trbn. Timp. Vln. Bass

sf
sf
sf
sf
sf
sf

Detailed description: This block contains the musical score for measures 22 through 28. It features the same eight staves as the previous block. The Flute and Violin parts have a melodic line with a crescendo leading to a sf dynamic. The Clarinet and Bassoon parts have a rhythmic accompaniment with sf dynamics. The Bassoon, Trumpet, and Trombone parts have a rhythmic accompaniment with sf dynamics. The Timpani part has a simple rhythmic pattern with sf dynamics. The Bass part has a rhythmic accompaniment with sf dynamics.

29

Fl.

Cl. (A)

Bssn.

Trpt. (C)

Trbn.

Perc.

Timp.

Vln.

Bass

sf

sf

sf

sf

f

sf

sf

36

Fl.

Cl. (A)

Bssn.

Trpt. (C)

Trbn.

Timp.

Vln.

Bass

sf p

sf p

sf p

p mp mf p

sf p

A

42

Fl.

Cl. (A)

Bssn.

Trpt. (C)

Trbn.

Timp.

Vln.

Bass

mf

sf

p

mf

sf

p

mp

mf

sf

sf

mf

pizz.

mf

sf

mf

48

Fl.

Cl. (A)

Bssn.

Trpt. (C)

Trbn.

Perc.

Timp.

Vln.

Bass

mp

p

p

sf

ff

ff

mf

sf

ff

sf

ff

p

sf

f

mf

sf

ff

mp

sf

ff

55

Fl.

Cl. (A)

Bssn.

Trpt. (C)

Trbn.

Perc.

Vln.

Bass

sf *mf* *mf* *mf*

sf *mf* *mp*

sf *mf* *f* *mf* *pizz.* *mf*

sf *f* *mf*

mf *sf* *mp* *mp* *sf p*

mf *sf* *f* *mf* *f* *sf*

arco *arco* *pizz.* *arco*

sf *f* *mf* *f* *sf* *arco*

sf *f* *mf* *mf* *ff*

SAMPLE COPY - Do Not Use for Performance

B

62

Fl.

Cl. (A)

Bssn.

Trpt. (C)

Trbn.

Perc.

Vln.

Bass

sf *mf* *mf* *mf* *sf*

sf *mf* *mf* *sf*

sf *mf* *mf* *mf* *sf*

mf *sf* *mp* *mp* *sf p*

sf *mp* *f*

mf *arco* *arco* *pizz.* *arco*

sf *f* *mf* *f* *sf* *arco*

sf *f* *mf* *mf* *ff*

PRODUCTIONS

70

Fl. *f* *ff* *f* *ff*

Cl. (A) *fp* *fp*

Bssn. *fp* *fp*

Vln. *ff* *ff*

Bass *fp* *fp*

77

Fl. *mf* *mp*

Bssn. *mf* *f*

Vln. *pizz.* *mf* *mp*

Bass *mf* *mp*

85

Fl. *b2*

Cl. (A)

Bssn.

Trpt. (C)

Trbn.

Perc.

Vln.

Bass

93

Fl.

Cl. (A)

Bssn.

Trpt. (C)

Trbn.

Perc.

Vln.

Bass

mp

mf

101

Fl.

Cl. (A)

Bssn.

Trpt. (C)

Trbn.

Perc.

Vln.

Bass

mf

ff

mf

ff

mp

f

mf

f

mf

ff

mf

ff

109

Fl.

Cl. (A)

Bsn.

Trbn.

Vln.

117

Fl.

Cl. (A)

Bsn.

Trpt. (C)

Trbn.

Vln.

Bass

C

124

Fl.

Cl. (A)

Bssn.

Trpt. (C)

Trbn.

Perc.

Vln.

Bass

p

p

p

mf

p

131

Fl.

Cl. (A)

Bssn.

Trpt. (C)

Perc.

Vln.

Bass

sf

p

sf

mf

sf

p

sf

p

f

sf

mf

sf

mf

139

Fl. *mf* *ff*

Cl. (A) *mf* *ff* *mp*

Bsn. *ff* *p*

Timp.

Vln. *mp* *ff* *pizz.*

Bass *mp* *ff* *pizz. mf*

147

Fl. *mp* *mf dolce*

Cl. (A) *p* *mp* *p* *mf dolce*

Bsn. *p* *mf*

Trpt. (C)

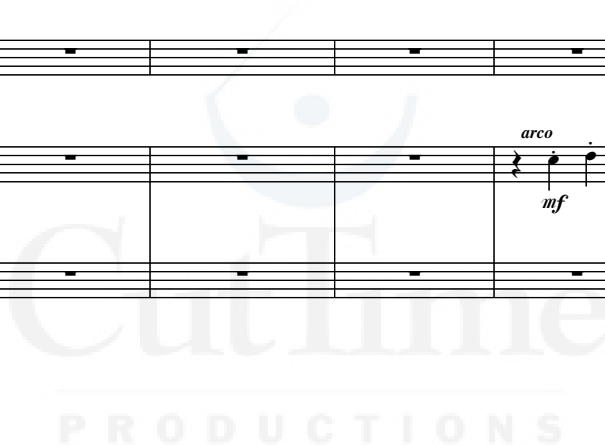
Trbn.

Timp.

Vln. *arco* *mf* *pizz.*

Bass

D



155

Fl.

Cl. (A)

Bssn.

Trpt. (C)

Trbn.

Perc.

Vln.

Bass

sf p

mf

mp

arco

pizz.

mf

arco

163

Fl.

Cl. (A)

Bssn.

Trpt. (C)

Trbn.

Perc.

Vln.

Bass

sf p

ff

f

ff

f

mp

ff

sf

p

sf

mf

f

ff

sf

mf

171

Fl. *mf* *ff*

Cl. (A) *sf* *p* *mf* *ff*

Bssn. *sf* *mf* *ff*

Trpt. (C) *sf* *p* *sf* *mf* *f*

Perc. *mp* *f*

Timp.

Vln. *sf* *mf* *mp* *ff*

Bass *mp* *ff*

Dynamic markings: *sf*, *mf*, *p*, *ff*, *mp*, *f*, *pp*, *pizz.*, *mf*.

179

Fl. *mp*

Cl. (A) *p*

Bssn. *p* *p*

Trpt. (C) *pp*

Timp.

Vln. *pizz.* *mf*

Bass *pizz.* *mf*

Dynamic markings: *mp*, *p*, *pp*, *pizz.*, *mf*.